

**SONY**

Hi-Fi Products  
Service Bulletin

Sony Service Company - Technical Services  
A Division of Sony Corporation of America  
Sony Drive, Park Ridge, New Jersey 07656

**Model:** TA-E1000ESD

**No. 193R1**

**Subject:** Error In Operation When Using  
Remote Commander RM-P1000

**Date:** June 20, 1991

This bulletin supersedes Hi-Fi Products Service Bulletin No. 193

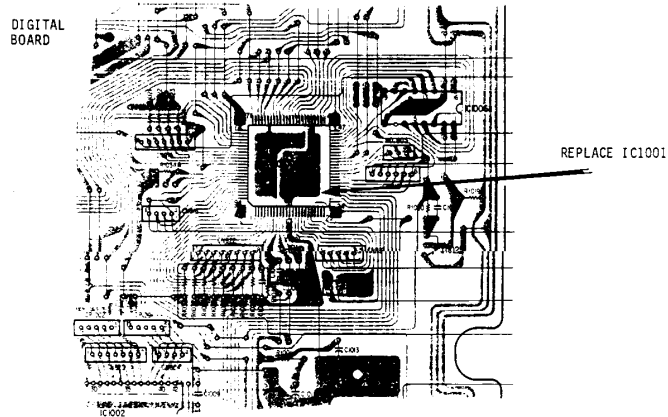
**Symptom:**  
(25)

When pressing the volume control to either increase or decrease its value, the surround mode may change. (Ex. from "Live Concert" to "Stadium")  
Remote commanders from CD or DAT players may also cause this symptom.

**Solution:**

Replace the IC1001 of the Digital board with the following.

Ref.#	Description		Part Number	
	Former	New	Former	New
IC-1001	μPD78224	μPd78224GJ-535-5BG	8-759-146-52	8-759-150-79



Reference: T/N AU91005

PRINTED IN U.S.A.  
CSA-13691-1

Pre-Amp/Signal Processor  
**CSA-13**